

U S  
T .

# Cloud Velocity



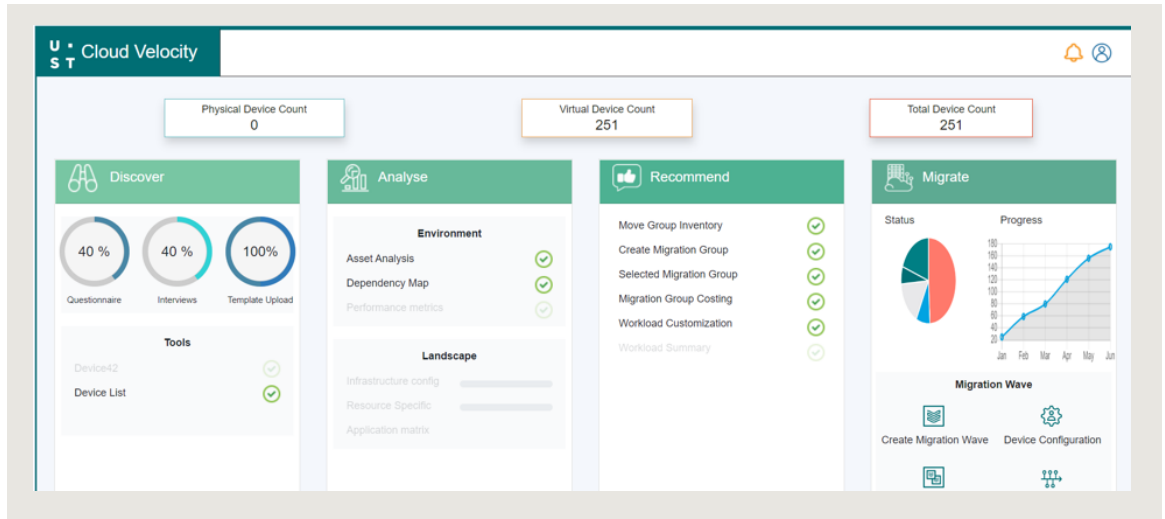
An intelligent platform  
for complete cloud  
migration lifecycle

[ust.com](https://ust.com)

An intelligent platform for complete cloud migration lifecycle. A platform which would increase agility by expediting the cloud adoption through accelerated cloud migration (automated Rehost 'lift and shift' migration). An end-to-end automated and AI based approach. Intelligent automation of data gathering and analysis for effective and better recommendations.

Key Pillars of Cloud Velocity: Discover, Analyze, Recommend, Migrate

Cloud Velocity Dashboard: Cloud Velocity dashboard showing the entire cloud migration steps and progress/status of each activity.



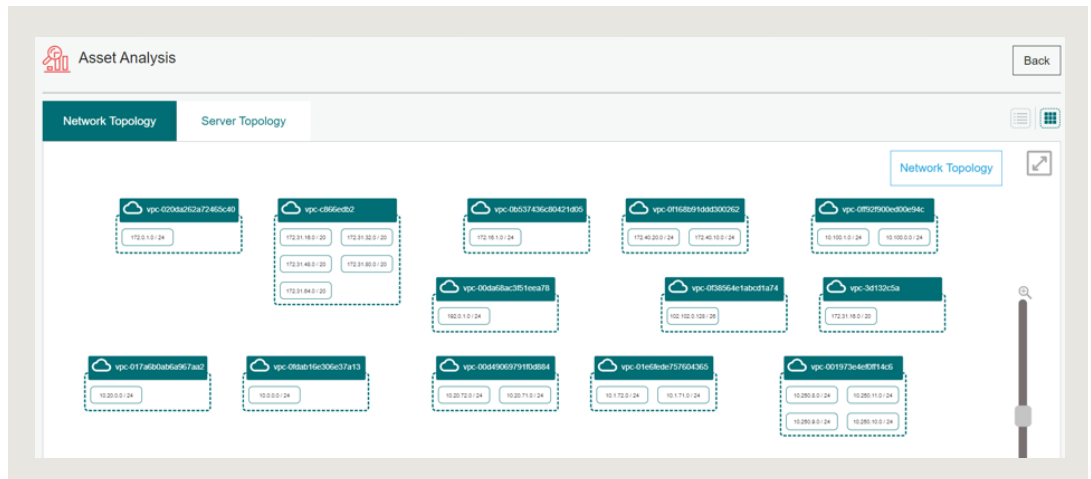
1. Discovery and Assessment – Discover phase is the process through which information about the source infrastructure is being collected. This process involves identifying details and its related components such as dependencies, applications and relationships between them. Discover phase is independent by itself wherein we can have any industry specific discovery tools which can capture the CIs integrated to have the data ingested. (Automated Discovery Tools like In-House build Discovery tool, Device 42, Template Upload provided by CMDB) Discovered Devices (injected to product) are reviewed and editable

Device List

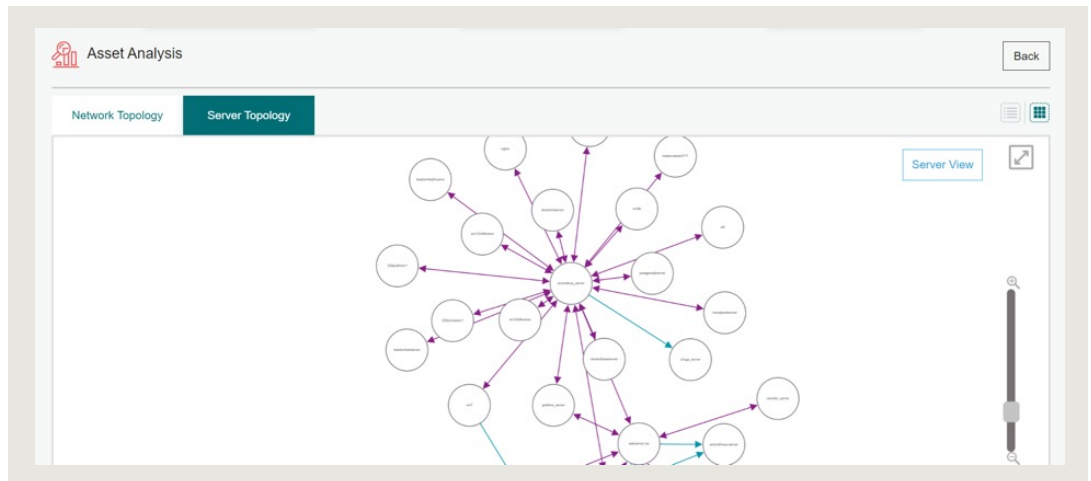
Infrastructure Device Data

#	Device	IP	CPU (GB)	RAM (GB)	CPU Count	CPU Thread	OS	Storage (GB)	Action
1	USTIMSADALVM01	10.3.0.8	4	16	1	1	CentOS Linux	512	Edit
2	USTIMSADAWSW01	10.3.0.7	4	16	1	1	Microsoft Windows Server 2016 Datacenter	512	Edit
3	webserver-qa	172.40.20.201	1	8	1	2	CentOS Linux	100	Edit
4	dbserver-qa	172.40.20.145	1	4	1	2	CentOS Linux	100	Edit
5	Athena_OpsRamp_Gateway	172.40.20.60	4	4	1	2	Microsoft Windows	100	Edit
6	AthenaApp_BastionHost_win	172.40.10.36	3	8	1	6	CentOS Linux	100	Edit

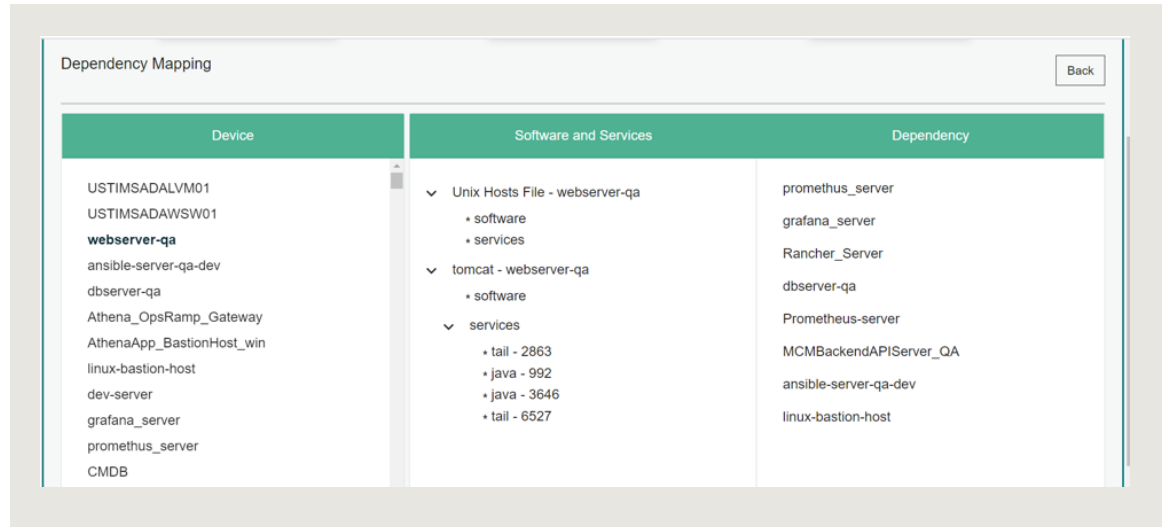
2. Asset Analysis - Asset analysis is where relationship between servers, applications and networks are analyzed from the discovered data through which servers can be clubbed either based on dependencies or applications to proceed with the migration process.
- a. Network topology defines the VPC's, alignment/arrangement of devices across the subnets available in the source infrastructure.



- b. Server topology is a pictorial representation of connection between devices with application and port level details. This view intends to provide the type of connection between servers in addition (unidirectional or bidirectional)



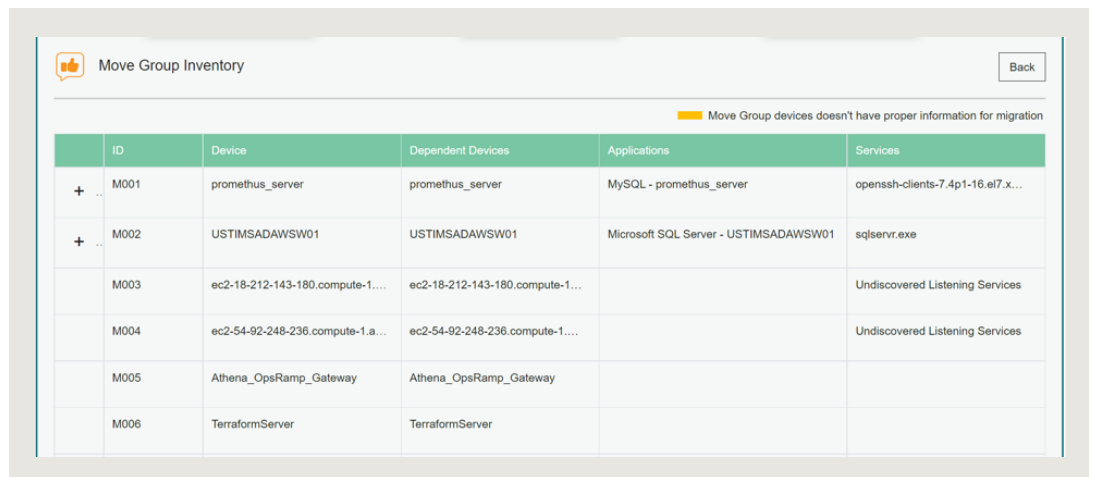
3. Dependency Mapping: Dependency view gives a holistic view of dependency between Devices, application and services that has been captured through Discovery tool



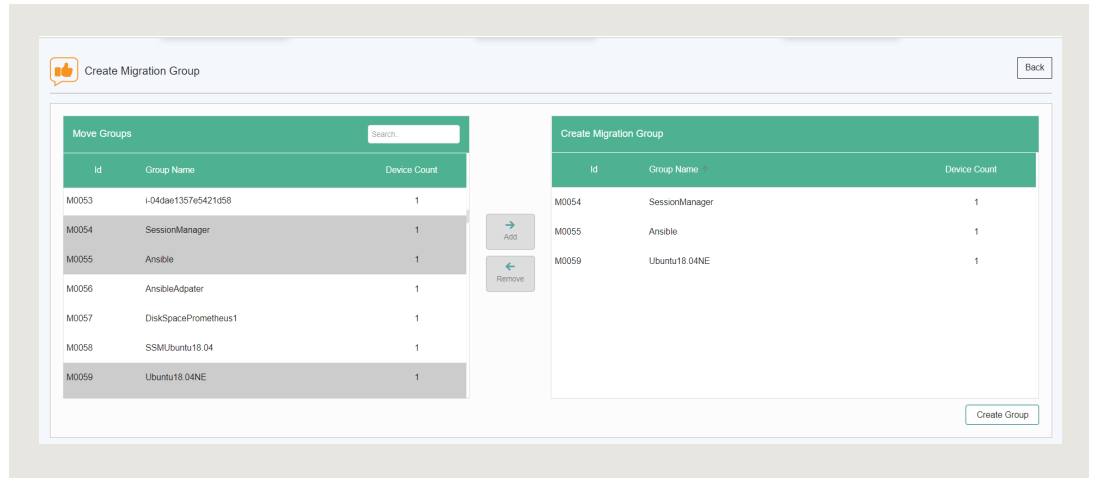
4. Recommend: Recommend phase of this product is the most pertinent phase, which recommends the best possible configuration along with the existing on-prem infrastructure details and with customizing options to optimize accordingly based on necessity across different cloud providers like (AWS, Google Cloud Provider and Azure) from the analyzed data. Recommendation process involves different phases through which Move groups can be clubbed together to form a migration group. Migration groups can then be customized based on the necessity based on workload, application and services.

**Features of recommend phase**

- Move Group Inventory
  - Move Group Customization
  - Migration Group Costing
  - Workload Customization
- a. Move Group Inventory – An AI/ML driven analytics engine which process data captured from discovery tool to group the devices as ‘Move groups’ based on the devices dependencies, applications they host, and the services required.



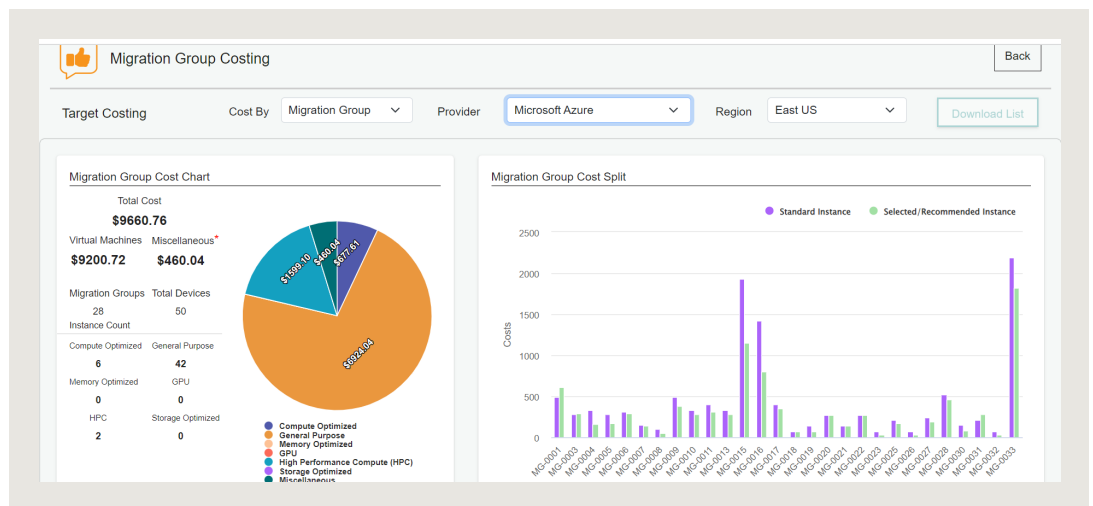
- b. Move Group Customization - Move Group Customization provides the option to end users to club or select the Move Groups for Migration as 'Migration group' based on the user needs.



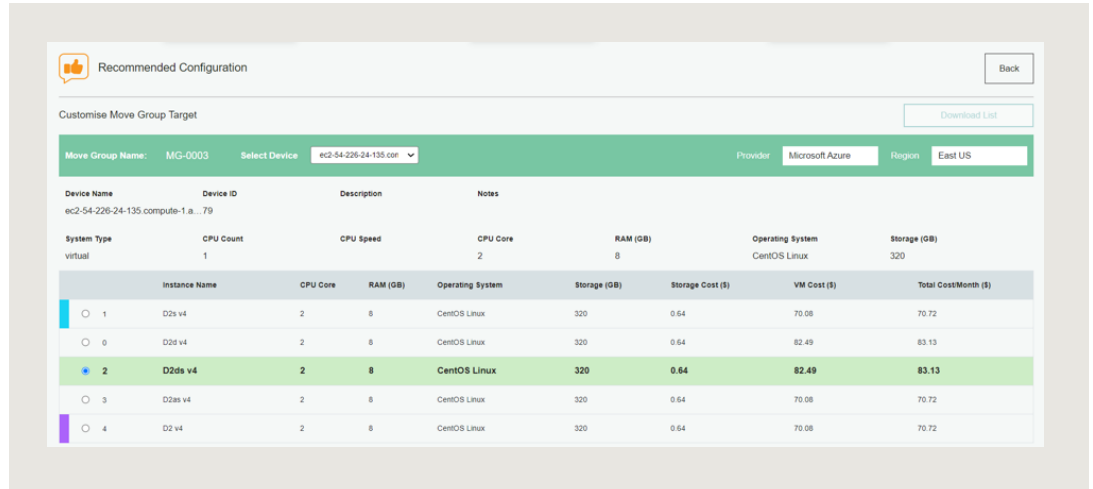
Migration Groups List

Migration Group ID	Move Groups Included	Dependent Device Count	Software Count	Service Count			
MG-0001	M003,M006,M007	3	0	1			
MG-0003	M0028,M0029,M0030	3	0	0			
MG-0004	M0019,M0020,M0022,M0021	4	0	0			
MG-0005	M0036,M0034	2	0	0			
MG-0006	M009,M0012,M0011	3	0	0			
MG-0007	M0010	1	0	0			
MG-0008	M0013	1	0	0			
MG-0009	M0014,M0015,M0016	3	0	0			
MG-0010	M0037	1	0	0			
MG-0011	M008,M0027	2	0	0			
MG-0013	M0044	1	0	0			
MG-0015	M0043,M0032,M0026,M0033	4	0	0			

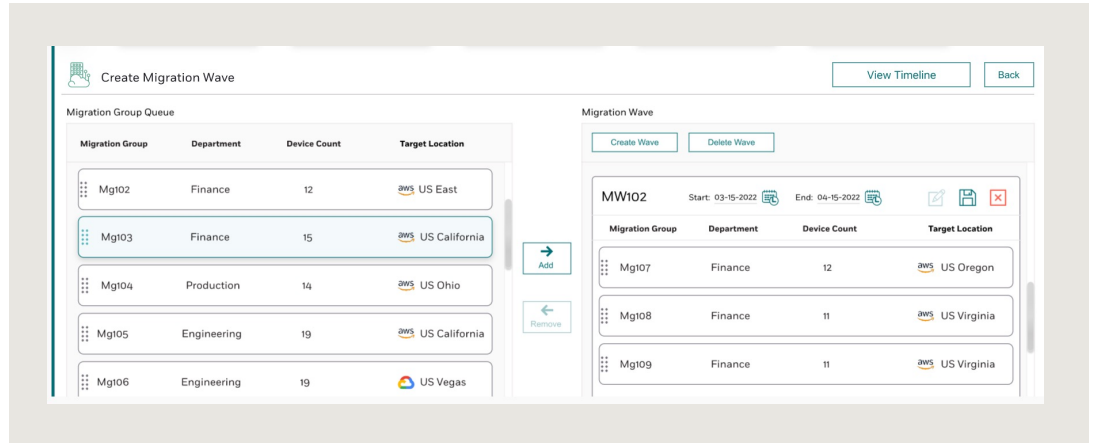
- c. Migration Group Cost Recommendation – An AI/ML driven analytics engine which recommends the Cost estimation provided based on Migration group configuration and selected cloud provider's catalogue.



- d. Recommended Configuration – An AI/ML driven recommendation engine which based on the device current configuration (the CPU core, RAM, OS and usage metrics) recommends best cloud instance types.



- 5. Migrate: To accelerate the cloud migration, cloud velocity product integrates market leading automated migration Tool. Migrate feature enables end users in migration wave planning, preparation and build the target cloud base infrastructure. Trigger the migration through the migration automation tool (using integrated scripts), capture and monitor the progress of migration and the cost incurred until the migration process is completed.
  - a. Migration Wave Creation: Migration wave enables the user to schedule the migration process by creating migration waves from the finalized migration groups.



- b. Target Cloud Configuration: To prep the target cloud and to setup set up the basic configurations of the devices in the cloud environment, details such as CIDR range, Subnet and I.P Address are to be captured from the customer.

The screenshot shows the 'Target Device Configuration' interface. At the top, there are buttons for 'View Timeline' and 'Back'. Below that, the title 'Target Device Subnet/IP Update : MW102' is displayed, along with a 'Download List' button. The main content is a table with the following columns: Device Name, Source Subnet, Source IP, Target Subnet, CIDR Range, Target IP, Migration Group ID, Wave ID, Target Cloud, and Action. The table contains six rows of device configurations.

Device Name	Source Subnet	Source IP	Target Subnet	CIDR Range	Target IP	Migration Group ID	Wave ID	Target Cloud	Action
alt-pass-dev1	subnet-c16f618b	172.40.20.201	Subnet-a213f23b	172.30.0.0/255	172.30.10.101	MG001	MW002	aws US Virginia	
akzonobel-cs-bc675k	subnet-c16f618b	10.3.0.7	Subnet-a213f23b	172.31.0.0/255	172.31.10.101	MG001	MW002	aws US Virginia	
Dcdbo6-JKh568	subnet-c16f618b	172.40.20.145	Subnet-a213f23b	172.32.0.0/255	172.32.10.101	MG001	MW002	aws US Ohio	
Alticor-CS-HFR347	subnet-c16f618b	172.40.20.60	Subnet-a213f23b	172.33.0.0/255	172.33.10.101	MG002	MW002	aws US Ohio	
AM-CS-JKL7854GH	subnet-c16f618b	172.40.10.140	Subnet-a213f23b	172.34.0.0/255	172.34.10.101	MG003	MW002	aws US Oregon	
CSX-TS-JVD453D	subnet-c16f618b	172.0.1.71	Subnet-a213f23b	172.35.0.0/255	172.35.10.101	MG003	MW002	aws US Oregon	

- c. Migration Launchpad – The launchpad for initiating and triggering the automated migration and capturing the migration progress (status).

The screenshot shows the 'Device migration Launch Pad' interface. At the top, there are buttons for 'View Timeline' and 'Back'. Below that, the title 'Device migration Launch Pad' is displayed, along with a 'Start Migration' button. The main content is a table with the following columns: Wave, Group, Device, Provider, Region, Notes, Agent, Replication, Migration, and Remarks. The table contains six rows of migration progress data.

Wave	Group	Device	Provider	Region	Notes	Agent	Replication	Migration	Remarks
MW102	4	38	aws	US Ohio, US Virginia, US Oregon	Infrastructure Devices notes				
		alt-pass-dev1				Installed	Complete	In Progress	Check Migration Progress <a href="#">here</a>
		akzonobel-cs-bc675k				Installed	Complete	<a href="#">Restart</a>	Migration stopped due to issue. Please Restart the migration
		Dcdbo6-JKh568				Installed	Complete	In Progress	Check Migration Progress <a href="#">here</a>
		Alticor-CS-HFR347				Installed	Complete	In Progress	Check Migration Progress <a href="#">here</a>
		AM-CS-JKL7854GH							
		CSX-TS-JVD453D							

Together, we build  
for boundless  
impact

[ust.com](https://ust.com)

© 2022 UST Global Inc.

**U ■**  
**S T**